



Comfort like mother's WOMB

product
catalogue
2019

Gel Cushioning Solutions

progel™ | CE



Company Profile

Gel Smith is India's leading manufacturer, developer and distributor of medical grade Gel based rehabilitation products, with branches all over India, was incorporated during the year 2006. A dedicated Foot Care and Health Care Product Division was thought of the year and within a short span of time we have formed a dedicated team to serve the Humanity.

We, at Gel Smith take great pleasure in introducing a unique, only one of its kind, "Progel" (Hydrocarbon based co-polymer compound). Our gel based products are designed to provide gel cushioning comfort for various applications. These products are cost effective, durable and are better than all available cushioning products. This material has exceptional gentle feeling on touch, which almost resembles the human body flesh. The rebounding effect of this material is more spontaneous than all the other contemporary available material like PU, Rubber or Sponge. Progel can provide you comforts, which none other can. Its various range of unique products will help you in tackling problems, which were till now considered unsurmountable.



Index

Foot Care	4-9
Hand Care	10-11
Bed Sore Prevention	12-14
Gel Sheet	15
Gel Seat Cushion	16-20
OEM Supplies	21-22
Artificial Organ	22
Gel Tube	23-24
Operation Theater Patient Positing Devices	25-31
Baby Care	32



Our Mission



Founded in 2006 under the motto of "Distributing Quality Medical Rehabilitation Products at Affordable Cost". Our mission is to improve the quality of life, through advanced medical technology. Commitments to Quality and Reliability. To provide technologically superior rehabilitation products with technical and clinical support to maximize benefits to the practitioners and their patients around the globe. Progel brand products have earned a reputation for quality and long life.

Our Vision



To provide comfort aids for restoration of the fullest functional activity, freely and painlessly.

Quality Policy



In-house facility for quality control at physical and mechanical level tests for product consistency measuring desired durability, strength and sure hardness for different product applications is done by trained P & O engineers and Bio-chemists. The product is certified for its requisite performance. Total quality testing meets world class standards. All the devices are developed at GMP certified manufacturing facility (ISO 9001:2015). The product ranges are CE complied. It is the policy of Gelsmith to provide quality products and services that consistently meet the needs and expectations of our customers and the regulatory requirements of our industry. Our objective is to be the quality leader in our markets as viewed by our customers.

Gel Technology

In general it has been a traditional art to provide a cushion, which achieves comfort by eliminating peak pressure areas and by evenly distributing the cushioning force over a broad surface area. Some of these attempts include foam cushions, fluid cushions, spring mattress and others.

Progel is similar to human flesh in its consistency, touch, and reaction to pressure. One of its great qualities in seating application is that the Progel conforms exactly to the body shape of the sitter, achieving a high degree of equal weight distribution and having good shock absorbing properties. The Progel's ability to flow ensures effective distribution of pressure. Progel can be more than 2000% expandable and offers a correspondingly high level of comfort.

Progel represents a physical state whose property lies between liquid and solid. It is formed by a three dimensional network structure dispersed in homogeneous liquid phase. Both the network and the liquid phase penetrate each other. In Progel the dispersed network is formed primarily of organic oils and copolymers, both of which are commonly referred as hydrocarbons. Hydrocarbons are elements, which are made up mainly of Carbon (C) and Hydrogen (H) atoms. They give Progel a considerable degree of dimensional stability and highly elastic character. Nevertheless, as a dispersant phase still has a certain amount of flowability, Progel is valuable for applications, which require a high level of pressure distribution or shock absorption capacity.

Progel has a significant impact resistance, shock absorption (1600 psi); extreme durability; non-toxic; hypoallergenic and doesn't support microbial growth; 100% pressure dispersion ability; high degree of elastomerism (up to 1000% i.e., 10 times relaxed length at failure); pressure dispersion ability; effective pressure relief; fatigue reduction; complete bed sore prevention; bulk specific gravity (0.3 g/cc to 0.9 g/cc) and bio-degradability makes it a versatile technology. The technology is developed to provide comfort to all ages during various stages of life and preventive health care benefits on long term usage.

As a result of its chemical structure, Progel offers an attractive property profile :

- Individually adjustable shore hardness
- Aesthetic appeal
- Hypoallergenic : Good skin compatibility
- Good pressure distribution
- High shock absorption
- High elasticity
- Good recovery capability
- Non irritating to skin
- Soft, Strong and Elastic
- Excellent moisture barrier
- Excellent low temperature properties
- Good high temperature properties
- Low dielectric constant



progel™



Foot Care



Code: A001 | Insole with High Arch & Heel Cup

- Conforms to foot contours (arch) & supports heel, arch & ankle preventing progressive flat foot, knee and spinal pain.
- Enhance body performance by elastomeric blood flow with complete body alignment/body weight re-distribution.
- Soft cushion which relieves tenderness to pressure and irritative conditions on the sole and heel of the foot.

S M L XL PAIR / PACK

Code: A002 | Insole with Arch & Metatarsal Pad

- Prevents sports related frictional injuries as starter arch provides median height that makes it ideal for sports and running.
- Posture correctness, elastomeric blood flow maintains neutral pronation and impact resistant towards injuries.
- Designed to support bones and bear all physical stress and strain.



S M L XL PAIR / PACK

Code: A003 | Plain Insole

- Extreme cushioning for sensitive neuropathic feet, transfers body weight from heel to toe, provides comfort and protection.
- Hypoallergenic, temperature homogeneity, impact resistance aids protection of diabetic feet.
- Improve blood circulation and stimulates the pressure points of the feet to relieve the arthritic pain which is generally on the ankles and knees.



S M L XL XXL PAIR / PACK

S: Small | M: Medium | L: Large
 XL: Xtra Large | XXL: Xtra Xtra Large | U: Universal
 Dimensions : L × W × H

Foot Care

GEL SMITH™

AN ISO 9001 - 2015 COMPANY



Code: A004 | Universal Plain Insole

- Provided with inbuilt guidelines for cutting the insole in desired size to fit in any shoe.
- Thin insole lining conforms to foot shape aid cushioning and prevent foot blisters/sores during long walks/jogs.
- Useful for providing relief to all types of foot pain & day long cushioning in all types of shoes/footwear except diabetics and body posture related back pains.
- Prevents developing of sores and hard skin beneath foot during long walks.

U PAIR / PACK

Code: A005 | 2/3rd Insole with High Arch

- Designed to conforms arch plate for comfort fit.
- Absorbs shocks, stabilizes foot in neutral position (body balancer) and prevent progressive flat foot and pronation.
- Support arch and control undesired motion, aligning heel and ankles.
- Easily affixed into any foot wear in use and ideal for all foot types.



S **M** **L** PAIR / PACK



Code: A006 | Heel Cup

- Help in correcting the alignment while walking, absorbs shock and give right elevation to the heel.
- Prevent feet from drying, cracking and peeling. Provides extreme cushioning to heel for relieving Heel Pain, Plantar Fasciitis & Achilles tendinitis.
- Medical grade elastomeric cup contoured to cradle heel cracks & ankle together, thereby prevents side-to-side motion stabilizing foot as it strikes on ground.

M **L** PAIR / PACK

Code: A007 | Heel Cup with Strip

- Elastomeric Oil Dispersion Technology based shock absorbing, fore foot pain modifier, impact resistant against high heel shear forces.
- Anti-slip & prevents abrasion, anti-perspiring & elastomeric-blood flow enhancer.
- Absorption of the shock on the ankle, knee, hip joints and spine.



S **M** **L** PAIR / PACK



Code: A008 | Heel Pad Dotted

- Increase heel cushion and defeat pressure which helps reduce strain, shock and vibration to joints.
- Targets heel pain attributed towards multiple ailments like Plantar Fasciitis or otherwise due to tiredness.
- Wedge design elevates the heel for pain relief associated with Achilles Tendonitis.
- Dotted profile for better comfort.

U PAIR / PACK

S: Small | M: Medium | L: Large
XL: Xtra Large | XXL: Xtra Xtra Large | U: Universal

Dimensions : L × W × H

www.gelsmith.com

Foot Care



Code: A009 | Heel Pad Plain

- Targets heel pain attributed towards multiple ailments like Plantar Fasciitis or otherwise due to tiredness.
- Wedge design elevates the heel for pain relief associated with Achilles Tendonitis.

 PAIR / PACK

Code: A010 | Heel Pad Donut

- Donut cut out area provides gel aided air cushioning to heel spurs.
- Prevents shock absorption by ~50% and loss of body alignment.
- Targets heel pain attributed towards multiple ailments like Plantar Fasciitis or otherwise due to tiredness.
- Wedge design elevates the heel for pain relief associated with Achilles Tendonitis.

 PAIR / PACK



Code: A011 | Heel Pad Pando

- Provides relief in extreme heel pain with bony prominences.
- Elevated high impact cushioning area prevents stress build-up on heel.
- Targets heel pain attributed towards multiple ailments like Plantar Fasciitis or otherwise due to tiredness.

 PAIR / PACK

Code: A012 | Heel Pad Female

- Cushioning to ladies heel while wearing high heels, reduces pain.
- Invisible gel cushion with tapered edges fits easily and alleviates annoying heel pains.

 PAIR / PACK



Code: A013 | Arch Support (Narrow Width)

- Realigns body posture by stabilizing foot in neutral position preventing pronation by contouring with arch plate in progressive flat footers.
- Control undesired motion, aligning heels & ankles, relieves progressive pain in heel, ankle, knee and spine.
- Designed to fit narrow arch of foot.

    PAIR / PACK

S: Small | M: Medium | L: Large
XL: Xtra Large | XXL: Xtra Xtra Large | U: Universal
Dimensions : L × W × H

Foot Care



Code: A014 | Arch Support (Wide Width)

- Realigns body posture by stabilizing foot in neutral position, preventing pronation by contouring with arch plate in progressive flat footers.
- Control undesired motion, aligning heels & ankles, relieves progressive pain in heel, ankle, knee and spine.
- Designed to fit wide arch of foot.

S M L XL PAIR / PACK

Code: A015 | High Arch with Heel Pad

- Starter arch with front wedging prevents progressive flat foot, calf muscle stiffness, painful shin splints & progressive pain towards ankles.
- Provides posture correctness controls undesired foot motion and prevents transferring of pressure on knees, hip and spine.



S M L XL PAIR / PACK

Code: A016 | Metatarsal Pad Male

- Provides comfort to forefoot pain caused by calluses, metatarsalgia, capsulitis & neuromas.
- Supports metatarsal - fore foot area while body weight is transferred from heel-via-arch to fore foot (gait cycle).
- Useful in management of post fore foot surgery; metatarsalgia and; progressive pain towards ankle.



U PAIR / PACK

Code: A017 | Metatarsal Pad Female

- The simple loop fits around the toe to hold this gel pad in place under the forefoot, relieving pressure on the plantar forefoot and metatarsal bones.
- Supports metatarsal-forefoot area while body weight is transferred from heel-via-arch to forefoot (gait cycle).
- Useful in management of post forefoot surgery; metatarsalgia and; progressive pain towards ankle.



U PAIR / PACK

Code: A018 | Toe Spreader for 5 Foot Fingers

- Keeps your toes spread, correcting the crowding that causes toes to rub; also an effective form of bunion pain relief that acts as a bunion corrector to promote proper toe alignment.
- Comfortably fits between toes to absorb pressure while reducing friction & irritation.
- Relieves pain from soft corns, overlapping toes, nail problems, bunions, hammer toes, planter fasciitis & poor circulations.
- Prevents discomfort in diabetic conditions.



U PAIR / PACK

S: Small | M: Medium | L: Large
XL: Xtra Large | XXL: Xtra Xtra Large | U: Universal

Dimensions : L × W × H



Code: A019 | Toe Separator

- Cushioning relief from the pain & soreness associated with soft corns or toes rubbing/chafing by reducing shear and inter digital pressure.
- Absorbs pressure & friction to end pinching & cramping; prevent aggravation of toe infection due to touch.
- 1 pack consist of a set of 4 pcs - S1 / M2 / L1

U SET OF 4 / PACK

Code: A020 | Toe Spreader

- Straighten & align toes by gentle constant pressure while spreading toes, relieving pain of overlapping toes / toe drift and painful bunions.
- Absorbs pressure & friction to end pinching & cramping; prevent aggravation of toe infection due to continuous touch.



S M L PAIR / PACK

Code: A021 | Toe Spreader with 1 Loop

- Pain relieving toe aligner and straightener with extreme cushioning between toes, able to provide care similar to Toe Spreader.
- Unlike Toe Spreader, its D-ring covers the big toe and thus it can be even used with slippers also. D-ring also provides extra stability to big toe too.



U PAIR / PACK

Code: A022 | Toe Spreader with 2 Loop

- Toe spreader is used to place between toes helpful in treating and preventing painful bunions with proper toe alignment to relieve pain from bunions.
- Separate overlapping toes for stability and comfort, keeps toes spread, preventing painful rubbing.
- It's best to use to treat the hallux valgus (bunion toe) deformity condition.

U PAIR / PACK



Code: A023 | Toe Spreader with Bunion Shield

- Straighten & reduces friction between toes (prevent infections) & sleeved cushion for painful bunions, lubricating skin with hypoallergenic medical grade Progel technology.
- Unlike Toe Spreader, its D-ring covers the big toe and thus it can be even used with slippers also. D-ring also provides extra stability to big toe.



U PAIR / PACK

S: Small | M: Medium | L: Large
XL: Xtra Large | XXL: Xtra Xtra Large | U: Universal
Dimensions : L × W × H

Foot Care



Code: A024 | Toe Spreader with 1 Loop and Metatarsal Pad

- Function as cushion to absorb excess pressure over the metatarsal area and provides an area of very soft padding for the balls of the feet. Fits width of the forefoot.
- Straighten and align toes by gentle constant pressure while spreading toes and reduce friction between toes preventing infections.
- Relieve pain of overlapping toes/toe drift and painful bunions.

U PAIR / PACK

Code: A025 | Toe Spreader with 1 Loop, Metatarsal Pad and Bunion Shield

- Fits width of the forefoot and gel layer protects bunion and big toe.
- Straighten and align toes by gentle constant pressure while spreading toes and reduce friction between toes preventing infections & relieve pain of overlapping toes/toe drift.
- Function as cushion to absorb excess pressure over the metatarsal area and provides an area of very soft padding for the balls of the feet.

U PAIR / PACK



Code: A026 | Toe Crest

- Relieve pressure and pain caused by hammer toes, claw toes and mallet toes.
- Ergonomically designed to fit the curve of toes.

U PAIR / PACK



Code: A027 | Lateral Wedge Heel Pad

- One side of heel inserts is raised for medial and lateral unloading.
- Designed to place under heel for reducing the pressure & stress on muscles, tendons and joints.

S M L PAIR / PACK



Code: A028 | Wedge Strips

- One side of foot inserts is raised for medial and lateral unloading.
- Designed to place under foot for reducing the pressure & stress on muscles, tendons and joints.

S M L PAIR / PACK



S: Small | M: Medium | L: Large
XL: Xtra Large | XXL: Xtra Xtra Large | U: Universal

Dimensions : L × W × H



Hand Care



Code: B001 | **Gel Ball Soft (Yellow)**

- Use for hand exercise in various hand muscle weakness conditions like Rheumatoid arthrites, paralysis of hand, hemeplagia etc.
- Post fracture & Post operated hand weakness condition.

S **M** **L** PIECE / PACK

S: Small | M: Medium | L: Large
XL: Xtra Large | XXL: Xtra Xtra Large | U: Universal
Dimensions : L × W × H

Hand Care



Code: B002 | **Gel Ball Medium (Red)**

- Use for hand exercise in various hand muscle weakness conditions like Rheumatoid arthrites, paralysis of hand, hemeplagia etc.
- Post fracture & Post operated hand weakness condition.

S **M** **L** PIECE / PACK

Code: B003 | **Gel Ball Hard (Blue)**

- Choice of hand exercise for sports persons.
- Increase maximum strength & Endurance of hand muscles.
- Use for hand exercise in various hand muscle weakness conditions like Rheumatoid arthrites, paralysis of hand, hemeplagia etc.
- Post fracture & Post operated hand weakness condition.



S **M** **L** PIECE / PACK

Code: B004 | **Round Gel For Finger**

- Use with concentric and eccentric exercises.
- A cross functional device - with applications ranging from rehab to stretching and strength training.
- Intuitive design with built-in recovery, available in 3 progressive densities (soft/yellow, red/medium, blue/hard) for a broad range of finger, hand, wrist and forearm exercises.



U PIECE / PACK





Bed Sore Prevention

Code: C001 | **Head Protector**

- Helps Protect the head, occipital nerve and ears from the development of pressure sores.
- Gel lining provides extra comfort to protect the head especially occipital parietal bones, occipital nerve and ears from the development of bed sore by relieving the excessive pressure.
- Used after neuro surgery to prevent any injury at operation sites.
- Easy to donning & doffing.



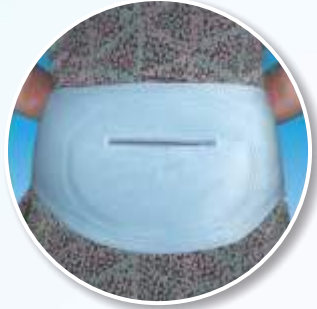
S M L XL XXL PIECE / PACK

S: Small | M: Medium | L: Large
XL: Xtra Large | XXL: Xtra Xtra Large | U: Universal
Dimensions : L × W × H

Bed Sore Prevention

Code: C002 | Sacral Protector

- During excessive bed ridden cases sacral & coccyx area need good protection from bed sore formation. Sacral is the first for most & prominent area that develop bed sore easily in bed ridden cases because comatose patient is usually in Supine lying position.
- Sacral protector helps to prevent the developing of bed sore at this pressure bearing area.
- Easy to donning & doffing.



S M L XL XXL PIECE / PACK

Code: C003 | Hip Protector

- During excessive bed ridden & mid prone position cases trochanter of femur head (hip area) is the most prominent pressure bearing area, in case of side lying need protection & pressure relief to either side from bed sore by Hip Protector.
- Relieve pressure from transverse fascia lata & speed up the recovery for further rehabilitation.
- Easy to donning & doffing.



S M L XL XXL PIECE / PACK

Code: C004 | Hip & Sacral Protector

- During excessive bed ridden cases sacral, coccyx & hip area need good protection from bed sore.
- Hip protector help during side lying & sacral piece during supine lying, either side & sacral protection possible.
- Relieve pressure from transverse fascia lata & speed up the rehabilitation.
- Easy to donning & doffing.



S M L XL XXL PIECE / PACK

Bed Sore Prevention

Code: C005 | **Heel Protector**



- During excessive bed ridden cases heel need good protection from bed sore formation at heel area. Heel is the Second prominent area that develop bed sore easily in bed ridden cases.
- Prevent bed sore at posterior calcaneum during supine lying.
- Protect lateral & medial side skin breakage of heel area by pressure relief.
- Easy to donning & doffing.

S M L XL XXL PIECE / PACK

Instructions for use for C001 to C005 :

- Wash cloth & gel separately.
- When gel is dirty / sticky, Sponge the gel with talcum powder and remove extra powder by washing the gel with mild shampoo and fresh water.
- Shade dry. Keep away from direct heat.

Code: C006 | **Heel Cup with Velcro**

- Designed to provide pressure relief for patient's heels.
- Suitable for use during and after most surgical procedures and can be used also for patients who are confined to bed or are in a day chair.
- Elastic band with velcros help in keeping the product at its place.



U PAIR / PACK

Code: C007 | **Bed Sore Prevention Sheet**

- Anti-sweating (corrugated) or extreme pressure distribution (plain) variants of bed sore sheets provide ideal choice to patients suffering or prone to suffer from bed sores.
- Extremely softness grade of gel provides enhanced comfort and care to patients.



24" X 36" | Thickness: Corrugated : 18 mm
Plain : 15 mm

U PIECE / PACK

S: Small | M: Medium | L: Large
XL: Xtra Large | XXL: Xtra Xtra Large | U: Universal
Dimensions : L × W × H

Gel Sheet

Code: D001 | Scar Reduction Sheet

- Organic oil moistening reduces irritation/ itching, promotes natural healing & faster recovery by providing inert and hygienic micro-environment.
- Elastomeric compression aids in reducing hypertrophic and keloid scars by flattening, softening, smoothing & bending of scarred tissue in 8-12 weeks (depending upon age & type of scar).
- Easily removable, soothing natural skin touch and leaves no greasy marks (non-fluidic). Not to be used on open wounds.



S M L PIECE / PACK

Code: D002 | Plain Gel Sheet

- Increases cushioning with sheet thickness as 3, 6, 9 and 12 mm can reduce tossing and turning pressure.
- Antivibrational; bed sore prevention and; fatigue /impact resistant respectively and cumulatively.
- Pressure point reliever gel sheet with super cloth layer on one side.
- Used in skin abrasions conditions after an accident to avoid the further wear and tear of the skin during long stay in bed.



24" X 24" | Thickness: 3, 6, 9 & 12mm PIECE / PACK

Code: D003 | Pressure Relief Padding

- Pressure point reliever gel sheet with super cloth layer on one side & 4 way stretchable cotton cloth on another side for extra durability.
- Use to relieve the pressure from pressure area in various prosthetics & orthotics appliances.
- Use for pressure relief purpose, specially for pressure bearing areas to avoid the direct pressure.



24" X 24" | Thickness: 3, 6, 9 & 12mm PIECE / PACK

S: Small M: Medium L: Large
XL: Xtra Large XXL: Xtra Xtra Large U: Universal

Dimensions : L × W × H



Gel Seat Cushion



Code: E001 | Cervical Support (1 side counter)

- The orthopaedic pillow maintains its shape providing cervical support and keeping your neck level aligned with your spine.
- The contour pillow is great for those with sports injuries, arthritis or whiplash related issues.
- Pillow is flexible, yet stiff for good support.

 PIECE / PACK

Code: E002 | Cervical Support (2 side counter) with memory foam

- Eliminate head and neck pain with the soft memory foam pillow.
- Contour shaped Memory foam pillows for cervical, neck & back pain relief for Back and side sleepers. Unique cooling progel pads keep head cool through the night.
- The cervical pillow stays firm and comfortable for months on end.

 PIECE / PACK



S: Small | M: Medium | L: Large
XL: Xtra Large | XXL: Xtra Xtra Large | U: Universal
Dimensions : L × W × H

Gel Seat Cushion



Code: E003 | Back Support

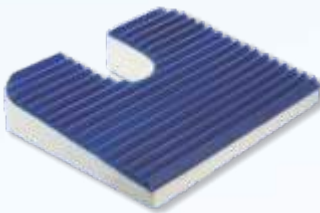
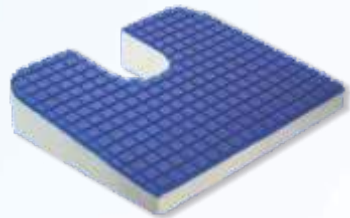
- Supports lower back and spine by promoting a neural spinal posture.
- Provides comfort in back pain, fatigue and soreness of the back.
- MDI Foam with a thick small square tile gel layer on top provides comfort and an excellent cooling effect.

U PIECE / PACK

Code: E004 | Coccyx Gel Cushion (Square Type)

- Panacea for coccylenia patient (Coccyx pain). Prevent nutation & curvature nutation of Coccyx.
- Economical seat cushion with coccyx cut out to provide air cushioning to tail bone, 10 mm thick square tile gel sheet distribute pressure equally at buttocks, manages body heat and conforms body shape.
- Sitting mass, stability to cushion is provided by closed cell high density PU foam. Wedge type with slope allows weight transfer to feet faster, aid spinal alignment.

U PIECE / PACK



Code: E005 | Coccyx Gel Cushion (Corrugated Type)

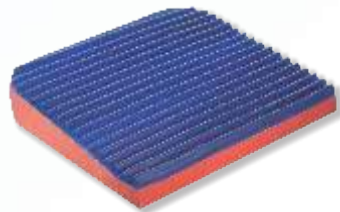
- Panacea for coccylenia patient (Coccyx pain). Prevent nutation & curvature nutation of Coccyx.
- Premium seat cushion with coccyx cut out to provide air cushioning to tail bone, 18 mm thick corrugated gel sheet distribute pressure equally at buttocks, manages body heat and conforms body shape.
- Sitting mass, stability to cushion is provided by closed cell high density PU foam. Wedge type with slope allows weight transfer to feet faster, aid spinal alignment.

U PIECE / PACK

Code: E006 | Multi Purpose Seat Cushion

- Provide comfort in long sitting position on any chair.
- Provide normal curvature to back & prevent lot of spinal problems.
- For extra comfort with base of Tapered PU Foam Padding.
- Top corrugated gel sheet distribute pressure equally at buttocks, manages body heat and conforms body shape.
- Sitting mass, stability to cushion is provided by open cell low density PU foam. Wedge type with slope allows weight transfer to feet faster, aid spinal alignment.

U PIECE / PACK



Code: E007 | Piles Seat Cushion

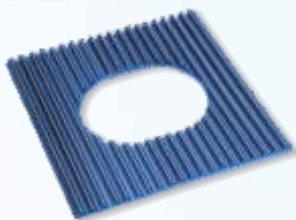
- Flat seat cushion with donut cut out to provide air cushioning to middle of buttock area (piles), top 18 mm corrugated gel sheet distribute pressure equally at buttocks, manages body heat and conforms body shape.
- Sitting mass, stability to cushion is provided by closed cell high density PU foam beneath corrugated gel sheet, encapsulated in incontinent proof and breathable extension fabric (wicks away moisture & heat).

U PIECE / PACK

S: Small | M: Medium | L: Large
XL: Xtra Large | XXL: Xtra Xtra Large | U: Universal

Dimensions : L × W × H

Gel Seat Cushion



Code: E008 | **Commod Seat Pad**

- Gel commode pads provide comfort and relief while toileting.
- These gel toilet seat cushions are easy to clean with standard disinfectant, will not support microbiological growth and do not absorb body fluids or odors.
- Will does not leak, flow, or bottom out.

U PIECE / PACK

Code: E009 | **Wheel Chair Cushion (Corrugated)***

- Corrugated gel layer 18 mm thick & 1 inch soft PU foam base with cloth cover provides ultimate comfort and better posture.
- Reduces Skin temperature, heat flux and relative humidity.
- Temperature remains static under the ischial tuberosities and posterior thighs.
- Effectively reduce ischemic tissue damage.
- Reduces the incidence of pressure sores.
- Last long and infection free.



U PIECE / PACK

Code: E010 | **Wheel Chair Cushion (Round Balls)***

- Round ball gel layer 20 mm thick & 1 inch soft PU foam base with cloth cover provides ultimate comfort and better posture.
- Reduces Skin temperature, heat flux and relative humidity.
- Temperature remains static under the ischial tuberosities and posterior thighs.
- Effectively reduce ischemic tissue damage.
- Reduces the incidence of pressure sores.
- Last long and infection free.



U PIECE / PACK

Code: E011 | **Wheel Chair Cushion (Small Square Tile)***

- Small square tile gel layer 10 mm thick & 1 inch soft PU foam with cloth cover base provides ultimate comfort and better posture.
- Reduces Skin temperature, heat flux and relative humidity.
- Temperature remains static under the ischial tuberosities and posterior thighs.
- Effectively reduce ischemic tissue damage.
- Reduces the incidence of pressure sores.
- Last long and infection free.



U PIECE / PACK

Code: E012 | **Wheel Chair Cushion (Big Square Tile)***

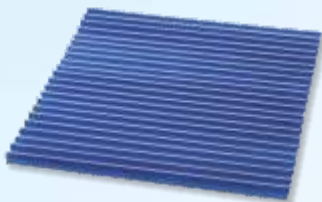
- Big square tile gel layer 22 mm thick & 1 inch soft PU foam with cloth cover base provides ultimate comfort and better posture.
- Reduces Skin temperature, heat flux and relative humidity.
- Temperature remains static under the ischial tuberosities and posterior thighs.
- Effectively reduce ischemic tissue damage.
- Reduces the incidence of pressure sores.
- Last long and infection free.



U PIECE / PACK

S: Small | M: Medium | L: Large
XL: Xtra Large | XXL: Xtra Xtra Large | U: Universal
Dimensions : L × W × H

Gel Seat Cushion



Code: E013 | **Bed Sore Prevention Pad (Corrugated)***

- Corrugated gel layer 18 mm thick with cloth cover provides ultimate comfort and better posture.
- Reduces Skin temperature, heat flux and relative humidity.
- Temperature remains static under the ischial tuberosities and posterior thighs.
- Effectively reduce ischemic tissue damage.
- Reduces the incidence of pressure sores.
- Last long, washable and infection free.

U PIECE / PACK

Code: E014 | **Bed Sore Prevention Pad (Round Balls)***

- Round ball gel layer 20 mm thick with cloth cover provides ultimate comfort and better posture.
- Reduces Skin temperature, heat flux and relative humidity.
- Temperature remains static under the ischial tuberosities and posterior thighs.
- Effectively reduce ischemic tissue damage.
- Reduces the incidence of pressure sores.
- Last long, washable and infection free.



U PIECE / PACK

Code: E015 | **Bed Sore Prevention Pad (Sml. Sqr. Tiles)***

- Small square tile gel layer 10 mm thick with cloth cover provides ultimate comfort and better posture.
- Reduces Skin temperature, heat flux and relative humidity.
- Temperature remains static under the ischial tuberosities and posterior thighs.
- Effectively reduce ischemic tissue damage.
- Reduces the incidence of pressure sores.
- Last long, washable and infection free.



U PIECE / PACK

Code: E016 | **Bed Sore Prevention Pad (Big Sqr. Tiles)***

- Big square tile gel layer 22 mm thick with cloth cover provides ultimate comfort and better posture.
- Reduces Skin temperature, heat flux and relative humidity.
- Temperature remains static under the ischial tuberosities and posterior thighs.
- Effectively reduce ischemic tissue damage.
- Reduces the incidence of pressure sores.
- Last long, washable and infection free.



U PIECE / PACK

Code: E017 | **Wheel Chair Cushion (Economy)**

- 15 mm gel layer encapsulated at prominent pressure area in profiled PU foam base with cloth cover to eliminate pressure points for providing ultimate comfort and better posture.
- Reduces Skin temperature, heat flux and relative humidity.
- Temperature remains static under the ischial tuberosities and posterior thighs.
- Effectively reduce ischemic tissue damage.
- Reduces the incidence of pressure sores.
- Last long and infection free.

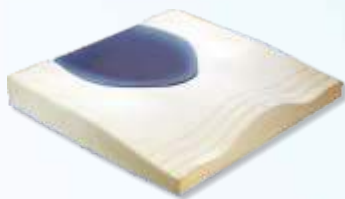


U PIECE / PACK

S: Small | M: Medium | L: Large
XL: Xtra Large | XXL: Xtra Xtra Large | U: Universal

Dimensions : L × W × H

Gel Seat Cushion



Code: E018 | **Wheel Chair Cushion (1 size fits all)**

- 25 mm gel layer encapsulated at prominent pressure area in profiled PU foam base with cloth cover to eliminate pressure points for providing ultimate comfort and better posture.
- Inbuilt guidelines provided to customised the cushion as desired.
- Reduces Skin temperature, heat flux and relative humidity.
- Temperature remains static under the ischial tuberosities and posterior thighs. Effectively reduce ischemic tissue damage.
- Reduces the incidence of pressure sores. Last long and infection free.

U PIECE / PACK

Code: E019 | **Gel Mattress**

- Provide comfortable position for Comatose patient.
- Foldable three slabs of 18 mm thick corrugated gel layer pasted on 2" soft PU foam base with cloth cover provides ultimate comfort and better posture.
- Reduces Skin temperature, heat flux and relative humidity.
- Effectively reduce ischemic tissue damage & incidence of pressure sores. Last long and infection free.

U PIECE / PACK

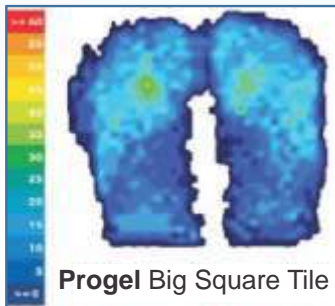


Pressure Mapping Evaluation of Wheel Chair Cushion (Big Square Tile)

Properties and benefits

- Reduces Skin temperature, heat flux and relative humidity.
- Temperature remains static under the ischial tuberosities and posterior thighs.
- Effectively reduce ischemic tissue damage.
- Reduces the incidence of pressure sores.
- Last long, washable and infection free.
- Ultimate comfort and better posture.

Pressure Mapping Evaluation



Available size combination (in inches)

Width	14	15	16	17	18
Depth	14	15	16	17	18

**Above size chart is applicable for product code E009 to E016.*

S: Small | M: Medium | L: Large
XL: Xtra Large | XXL: Xtra Xtra Large | U: Universal
Dimensions : L × W × H

Gel OEM Supplies



Code: F001 | Tennis Elbow Pad (Square)

- Progel device insert for fitting into Tennis Elbow Support Device.
- Aid in relieving the pain by putting right strain while cushioning elbow area simultaneously.
- Relieving from Tennis Elbow pains.

U PIECE / PACK

Code: F002 | Tennis Elbow Pad (Round)

- Progel device insert for fitting into Tennis Elbow Support Device.
- Aid in relieving the pain by putting right strain while cushioning elbow area simultaneously.
- Relieving from Tennis Elbow Pains.



U PIECE / PACK



Code: F003 | Lumbar Support Pad (Triangular)

- Progel device insert for fitting into Lumbar Support Device.
- Aid in relieving the pain while cushioning spine area simultaneously.
- Relieving from Lumbar Back Pains.

U PIECE / PACK

Code: F004 | Pressure Pads for Tubular Supports

- Progel custom made shape & size with one side covered with extra nonwoven cloth and another side covered with extra 2 way stretchable viscos cotton cloth.
- Extra cloth provided with progel for stitching gel device with any cloth product at desired place.

C PIECE / PACK



Code: F005 | Knee Support Ring (Circular)

- Progel Knee Support Ring (Circular) is designed to get fit in knee support devices.
- Support to knee cap-open patella & protects knee by restricting unwanted movements.
- Aid in body alignment & cushioning protective interface is provided by the Progel.

S M L PIECE / PACK

S: Small | M: Medium | L: Large | C: Customized
XL: Xtra Large | XXL: Xtra Xtra Large | U: Universal

Dimensions : L × W × H



Gel OEM Supplies



Code: F006 | Knee Support Ring (Circular-Wide)

- Progel Knee Support Ring (Circular-Wide) is designed to get fit in Knee Support devices.
- Support to knee cap-open patella & protects knee by restricting unwanted movements.
- Aid in body alignment & cushioning protective interface is provided by the Progel.

U PIECE / PACK

Code: F007 | Knee Support Ring (Deluxe)

- Progel Knee Support Ring (Deluxe) is designed to get fit in Knee Support devices.
- Support to knee cap-open patella & protects knee by restricting unwanted movements.
- Aid in body alignment & cushioning protective interface is provided by the Progel.

U PIECE / PACK



Code: F008 | Ankle Pads

- Progel Ankle pad is scientifically designed to get fit in ankle support devices.
- Support to ankle & protects ankle by restricting unwanted movements.

M L PIECE / PACK

Code: F009 | Ankle Brace (1 no. consist of 3 pcs)

- Progel Ankle Brace set is designed to get fit in any Stirrup Ankle Brace.
- Comfortably supports the medial and lateral (left and right) sides of the ankle.
- Recommended in sprains & strains of ankle joint & in post operative rehabilitation.

U 3 PCS. SET / PACK



Artificial Organ



Code: G001 | Artificial Breast (Tear Drop)

- Natural skin touch / skin coloured progel breast prosthesis provides elastomeric oil massaging aid in protecting surgically traumatized breast site.
- Water resistant (not to remove in swimming pools). No special cradle required to retain shape as impact resistant, hygienic, washable, non-leaky (as other jelly breasts) with long life utility.
- Aid in providing artificial breast during post-mastectomy (surgical removal of complete breast).
- For external use only.

S M L XL PIECE / PACK

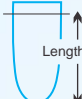
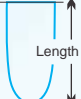


S: Small | M: Medium | L: Large
XL: Xtra Large | XXL: Xtra Xtra Large | U: Universal
Dimensions : L × W × H

Gel Tubes



Code: H001 | Amputated Leg Liner

- Designed to cushion and protect bony areas.
- Reduce friction and abrasive shear forces, to combat energy robbing friction, uncomfortable pressures within your socket
- Gel liners available with 6mm gel thickness at distal end, gel is encapsulated between two cotton layers.

Size	Description	Approx. Gel Length	Approx. Length	Approx. Distal Circ	Approx. Proximal Circ.
					
1	Child	8" / 20 cm	10"-13"/25cm-34cm	6.5"-9.5"/17cm-24cm	6.5"-10.5"/17cm-26cm
2	Short/Narrow	10" / 25 cm	15"-17"/38cm-44cm	7"-11"/18cm-28cm	7"-12.5"/18cm-32cm
3	Short/Regular	10" / 25 cm	15"-17"/38cm-44cm	8"-13"/20cm-34cm	8"-15"/20cm-38cm
4	Medium/Narrow	13" / 33 cm	17"-19"/43cm-49cm	8"-13"/20cm-34cm	8"-15"/20cm-38cm
5	Medium/Regular	10" / 25 cm	17"-19"/43cm-49cm	9"-15"/23cm-37cm	9"-17"/23cm-43cm
6	Large/Narrow	13" / 33 cm	18"-21"/46cm-54cm	9"-15"/23cm-37cm	9"-17"/23cm-43cm
7	Large/Regular	13" / 33 cm	18"-21"/46cm-54cm	11"-17"/28cm-42cm	11"-19"/28cm-49cm
8	Large/Wide	13" / 33 cm	18"-21"/46cm-54cm	12"-20"/31cm-50cm	12"-22"/31cm-56cm

Code: H002 | Gel Arthritic / Diabetic Sock (Nylon)

- Single layer sock with (3mm) of gel throughout the sole
- Helps prevent foot ulcerations.
- Can be used with or without diabetic shoes.
- Provides optimum protection for the neuropathic foot.
- Helps reduce friction, abrasion and shear forces while preventing callus formation.
- Serves as a soft tissue supplement for fat pad atrophy.

S M L XL XXL PIECE / PACK



Code: H003 | Gel Arthritic / Diabetic Sock (Cotton)

- Designed exclusively to provide compression at arch for reducing swelling of foot of diabetic patient with mild edema.
- Airflow channel breather design, comfortable soft ribs anti-perspiring / microbial fabric with super soft top (cuff comfort) & soft welt for better grip (non-slip wear).
- Reinforced extra terry cushion for whole foot area reduces discomfort in long standing and walking stress.

S M L XL XXL PIECE / PACK

Code: H004 | Gel Finger Tube (1 Side close)

- Digital Caps are a soft, comfortable, and stretchable fabric cap fully lined with Progel for all-around digital protection for relieving pressure and friction on the affected toe or finger.
- Relieves discomfort caused by painful ingrown toenails, hammertoes, toe tip, corns and blisters.
- Can be used to help treat nail or skin problems due to dryness.
- Fit toes or fingers (average cap length is 3").

S M L PIECE / PACK



S: Small M: Medium L: Large
XL: Xtra Large XXL: Xtra Xtra Large U: Universal

Dimensions : L × W × H

Gel Tubes



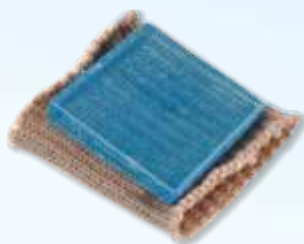
Code: H005 | Gel Open End Tube (8"Length)

- Progel ribbed knit tubes are fully lined with medical grade gel to provide all around digital protection while absorbing shock and pressure. Tubing can be trimmed to meet individual sizing needs.
- Not as bulky as conventional foam tubing.
- Durable and will not bottom out as foam material do.
- Can aid in reducing scar tissue.
- Fit toes or fingers (average tube length is 8").

S M L PIECE / PACK

Code: H006 | Gel Finger Pads

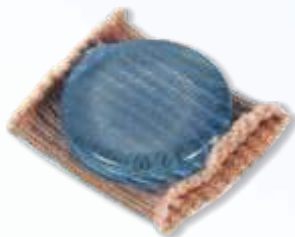
- Finger Pads are a soft, comfortable, and stretchable slip-on sleeve with square gel pasted inside.
- Helps to relieve painful corns and calluses.
- This product is washable and reusable.



S M L PIECE / PACK

Code: H007 | Gel Corn Pads

- Corn Pads are a soft, comfortable, and stretchable slip-on sleeve with round gel pasted inside.
- Helps to relieve painful corns and calluses.
- This product is washable and reusable.



S M L PIECE / PACK

Code: H008 | Gel Finger Cap

- Medical grade cap that isolates the injured / infected toe preventing the aggravation of injury due to frictional impact of the next toe.
- Helps to reduce discomfort associated with ingrown toenails, blisters, corns and other toe injuries. The cap reduces friction against the affected toe and provides general support and protection.



XS S M L PIECE / PACK

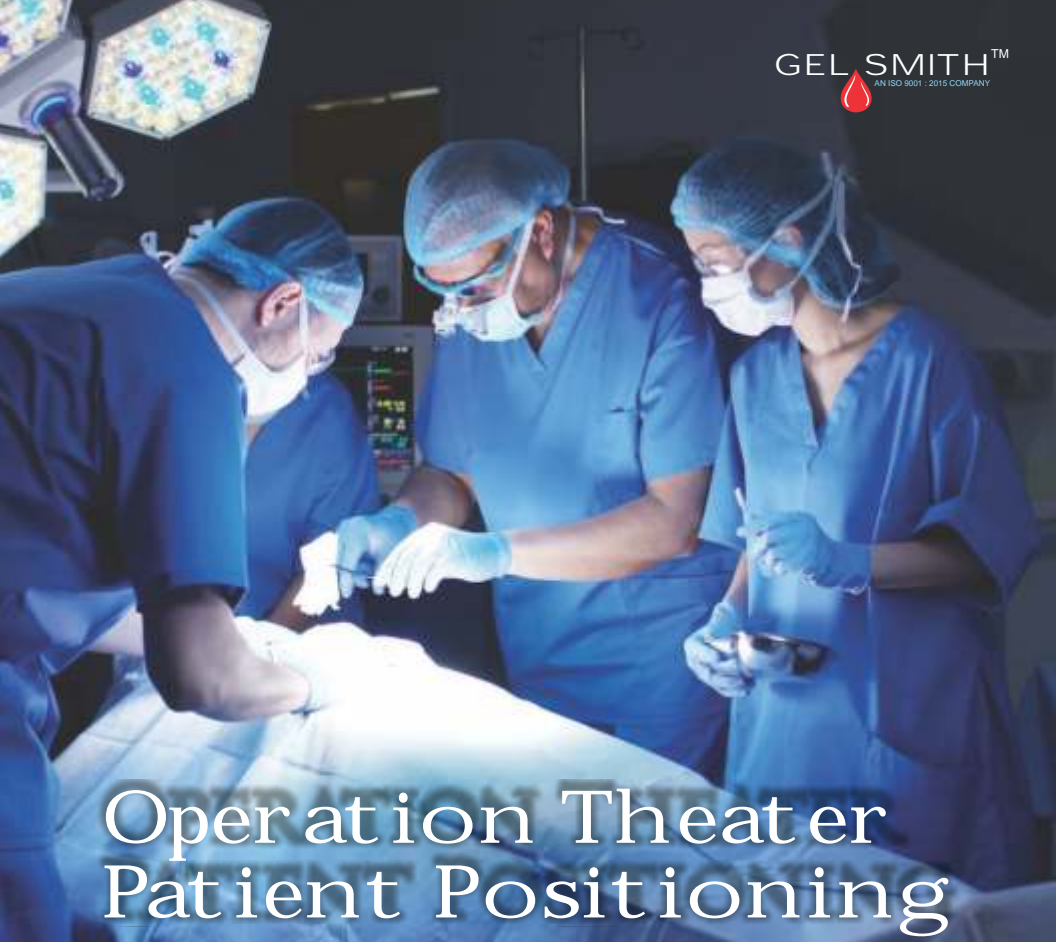
Code: H009 | Gel Sleeves for Hand & Leg

- Provide relief to dry, itchy and irritated skin.
- The sleeve is made with a soft, stretchy fabric that fits comfortably around your arm or leg.
- The extended length of the sleeve provides mild compression proximally. Boosts quality and appearance of skin.
- Reduces discomfort, redness, scars and blemishes.
- This product is washable and reusable.



S M L XL PIECE / PACK

S: Small M: Medium L: Large
XL: Xtra Large XXL: Xtra Xtra Large U: Universal
Dimensions : L x W x H



Operation Theater Patient Positioning



Code: OT001 | **Round Head Support
(Round Top) Close bottom**

- Supports patient's head with complete coverage to back of head during prolonged surgeries.
- Protect head, neck and ears in various positions by complete pressure redistribution.

(M) (L) (XL) PIECE / PACK

Code: OT002 | **Round Head Support
(Round Top) Open bottom**

- Supports patient's head during prolonged surgeries (air and gel cushioning)
- Protect skull, neck and ears in multiple positions by conforming to head's contour.

(M) (L) (XL) PIECE / PACK



S: Small | M: Medium | L: Large
XL: Xtra Large | XXL: Xtra Xtra Large | U: Universal
Dimensions : L × W × H

Operation Theater Patient Positioning



Code: OT003 | Round Head Support (Flat Top) Close bottom

- Flat top provides more stability to Head.
- Supports patient's head with complete coverage to back of head during prolonged surgeries.
- Protect head, neck and ears in supine positions by complete pressure redistribution.

S M L XL PIECE / PACK

Code: OT004 | Round Head Support (Flat Top) Open bottom

- Flat top provides more stability to Head.
- Supports patient's head during prolonged surgeries (air and gel cushioning)
- Protect skull, neck and ears in multiple positions by conforming to head's contour.

S M L XL PIECE / PACK



Code: OT005 | Head Support Supine / Countoured

- Relieves skull compression from head / calf in supine position (like eye surgeries) by providing cross-sectional stability.
- Contoured to match the anatomical shape of head by pressure redistribution in all directions.

U PIECE / PACK

Code: OT006 | Head Support Supine / Profile

- This Supine Head Rest is ideal for positioning the patient during eye surgery and other supine procedures.
- Ergonomically shaped to position the patient's head.
- Effectively protecting against the onset of pressure sores.

U PIECE / PACK



Code: OT007 | Head Support Ophthalmic Cradle

- Contoured cradling and extra support / stability to patient's head in supine or other positions preventing risk of alopecia in ophthalmic long tenured surgeries.
- Extensive pressure redistribution for complete head rest.

U PIECE / PACK

S: Small M: Medium L: Large
XL: Xtra Large XXL: Xtra Xtra Large U: Universal
Dimensions : L × W × H

Operation Theater Patient Positioning



Code: OT008 | Head Support for Eye Surgery (with easy flow of water at bottom)

- Protect skull, neck and ears in positions by conforming to patient's head during prolonged surgeries (air and gel cushioning).
- Easy flow of water at bottom from grooves, for the ophthalmic OT tables with water drainage point at center of head resting part.

(M) (L) PIECE / PACK

Code: OT009 | Head Support (Horse Shoe) Close Bottom

- Key hole cutout that makes it a favorite amongst anesthesiologists.
- Horseshoe design allows for prone and side facing positions.
- Solid material will not leak, ooze, or evaporate.

(S) (M) (L) (XL) PIECE / PACK



Code: OT010 | Head Support (Horse Shoe) Open Bottom

- The Open Head Ring provides support, stability & protection to the patient's face during surgery.
- Soft, comfortable and durable.
- Allowing easy access for intubation during surgery.

(S) (M) (L) (XL) PIECE / PACK



Code: OT011 | Head Support (Horse Shoe) with Eye Pressure Relief

- Supports patient's face during surgery allow access to intubation due to its contoured features.
- No pressure on eyes especially in prone position due to ergonomic design and elastomeric gel technology.

(U) PIECE / PACK



Code: OT012 | Prone Head Support

- Prone Head Rest is anatomically designed so that the patient's head can comfortably rest face down with respiratory tubes in place.
- The unique design provides excellent support, stability, comfort and protection during surgery in the prone position, with openings on both sides.

(M) (L) PIECE / PACK



S: Small | M: Medium | L: Large
XL: Xtra Large | XXL: Xtra Xtra Large | U: Universal
Dimensions : L × W × H

Operation Theater Patient Positioning



Code: OT013 | **Gel Base for Metallic Neurohead Frame**

- Provide cushioning interface to metallic neuro-head frame during prolonged brain surgeries.
- Supports patient's facial contours with complete pressure redistribution.
- Provided without neuro frame device.

U 1 SET OF 2 HALF PIECES / PACK

Code: OT014 | **Face / Forehead Protector Pad**

- Protect the patient's forehead / facial contours from pressure caused by endotracheal tubes.
- Universal protector and it can be used at any similar body site.



U PIECE / PACK

Code: OT015 | **Hand Rest (Contoured)**

- Anatomically shaped armboard pad to provide support by pressure redistribution.
- Slightly grooved to hold the arm with release of pressure on either direction.



U PIECE / PACK

Code: OT016 | **Flat Arm Board Pad**

- Provides stabilized resting state to the extended arm during prolonged surgeries.
- Standard OT Table Extensor useful in various body positions.



S **M** **L** PIECE / PACK

Code: OT017 | **Sacral Support**

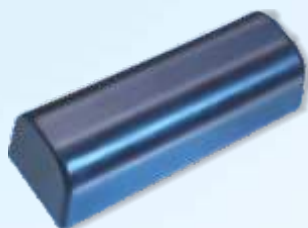
- Provides protection to unprotected sacral area in lithotomy and supine position, by relieving pressure and transversing it to peripheral areas.



U PIECE / PACK

S: Small | M: Medium | L: Large
XL: Xtra Large | XXL: Xtra Xtra Large | U: Universal
Dimensions : L × W × H

Operation Theater Patient Positioning



Code: OT018 | Multi Utility Bolster (Flat Top)

- Provides excellent support and stability to different areas of patient's body during prolonged surgeries.
- Pressure redistribution in chest area preventing bed sores.
- 8 sizes available as mentioned below:

Size 1: 300 x 145 x 105 mm

Size 2: 300 x 95 x 80 mm

Size 3: 400 x 95 x 75 mm

Size 4: 400 x 140 x 110 mm

Size 5: 410 x 145 x 145 mm

Size 6: 505 x 95 x 75 mm

Size 7: 505 x 140 x 110 mm

Size 8: 515 x 140 x 145 mm

PIECE / PACK

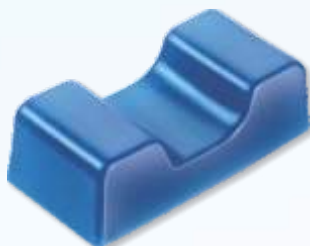
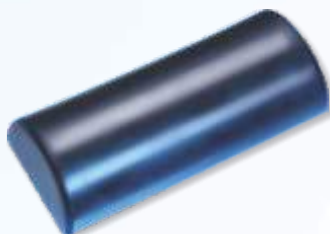
Code: OT019 | Multi Utility Bolster (Round Top)

- Provides excellent support and stability to different areas of patient's body during prolonged surgeries.
- Pressure redistribution in chest area preventing bed sores.
- 2 sizes available as mentioned below:

Size 1: 350 x 150 x 75 mm

Size 2: 430 x 160 x 85 mm

PIECE / PACK



Code: OT020 | Calf Support

- Relieves pressure & enhanced blood flow to lower extremity by elastomeric calf and ankle support and air cushioning to heels. Especially used in foot sole surgeries by exposing foot area.

U PIECE / PACK

Code: OT021 | Heel Support

- Suitable for use in any supine procedure where the heels are at risk of skin breakdown and damage.

M L PIECE / PACK



Code: OT022 | Patient Safety Strap

- For holding / strapping patient body parts with gel comfort.
- Providing pressure care to body.

S M L PIECE / PACK

S: Small | M: Medium | L: Large
XL: Xtra Large | XXL: Xtra Xtra Large | U: Universal
Dimensions : L × W × H

Operation Theater Patient Positioning



Code: OT023 | **Hip Pad**

- The pads are flexible, soft, comfortable and versatile and distribute weight evenly over the entire surface area.
- Supports patient's hip during prolonged surgeries.
- Hip Protection with centrifugal equidistant pressure distribution.

S **M** PIECE / PACK

Code: OT024 | **Crutch Stirrup Pad**

- Designed to fit both Lloyd Davies & various types of stirrups / leg-holders to relieve pressure from nerves and allows blood flow especially during lithotomy procedures.
- Protect against frictional impact, shear force and nerve injury.



S **M** **L** PIECE / PACK

Code: OT025 | **Knee Pad (Contoured)**

- Ergonomic designed support to leg and heel area protects popliteal nerve by aligning with knee groove till anterior end of ankle region.
- Standard OT table resting device useful in providing stability to multiple body positions.



U PIECE / PACK

Code: OT026 | **Operating Table Pad (Flat Type)**

- Table pads provide protection over the entire surface area of the operating table and are recommended for use with patients in all positions.
- The pads are flexible, soft, comfortable and versatile and distribute weight evenly over the entire surface area.
- Size: 500 × 500 × 12 mm



U PIECE / PACK

Code: OT027 | **Operating Table Pad (Corrugated Type)**

- Table pads provide protection over the entire surface area of the operating table and are recommended for use with patients in all positions.
- The pads are flexible, soft, comfortable and versatile and distribute weight evenly over the entire surface area.
- Size: 500 × 500 × 18 mm



U PIECE / PACK

S: Small | M: Medium | L: Large
XL: Xtra Large | XXL: Xtra Xtra Large | U: Universal
Dimensions : L × W × H

Operation Theater Patient Positioning



Code: OT028 | 3/4 Operating Table Pad (Flat Type)

- Provide protection over the 3/4 surface area of the operating table and are recommended for use with patients in all positions.
- The pads are flexible, soft, comfortable and versatile and distribute weight evenly over the entire surface area.
- Size: 1150 × 500 × 12 mm

 PIECE / PACK

Code: OT029 | 3/4 Operating Table Pad (Corrugated Type)

- Provide protection over the 3/4 surface area of the operating table and are recommended for use with patients in all positions.
- The pads are flexible, soft, comfortable and versatile and distribute weight evenly over the entire surface area.
- Size: 1150 × 500 × 18 mm



 PIECE / PACK



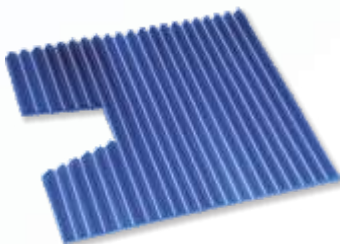
Code: OT030 | Perineal Operating Table Pad (Flat Type with Cutout)

- The Perineal Pad provides excellent protection to the sacral area, a point of maximum pressure.
- It is essential for all patients in the lithotomy position.
- Size: 500 × 500 × 12 mm

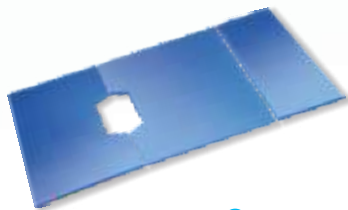
 PIECE / PACK

Code: OT031 | Perineal Operating Table Pad (Corrugated Type with Cutout)

- The Perineal Pad provides excellent protection to the sacral area, a point of maximum pressure.
- It is essential for all patients in the lithotomy position.
- Size: 500 × 500 × 18 mm



 PIECE / PACK



Code: OT032 | Operating Table Pad 3 Pcs Set (Flat Type)

- The 3 Piece Operating Table Pad is designed for use on sectioned tables. The set consists of a head section, torso section, and a foot section, with the latter two having a perineal cutout.
- The product provides a high degree of flexibility, versatility and protection during a variety of surgical procedures, particularly in the areas of Orthopaedics and Urology.
- Can also be used as a standard full length table pad.
- Size: 1715 × 500 × 12 mm

 PIECE / PACK

S: Small | M: Medium | L: Large
XL: Xtra Large | XXL: Xtra Xtra Large | U: Universal
Dimensions : L × W × H



Baby Care



Code: J001 | **Baby Pillow**

- Alignment of soft skull and extreme elastomeric cushioning aids baby's head.
- Extremely soft natural skin touch with oil massaging impact.

U PIECE / PACK

Code: J002 | **Baby Underlay Sheet**

- Developed from bed sore prevention technology with temperature management and unlike rubber baby beds, no slipping of bed sheet.
- Water proof technology with friction less urine flowing out of overlay prevents wetting of baby for longer periods during sleep.
- Elastomeric green color baby bed reduces tossing/ turning pressure, doesn't bottoms out and one side covered with nonwoven layer, simple dip washable.

U PIECE / PACK



Code: J003 | **Neonatal Gel Underlay**

- Developed exclusively for new born babies (infants/neonatal) with ball type configuration provide air cushioning to soft body parts.
- Water proof and gaps between balls take urine that flows out prevents wetting of baby for longer periods. Bouncing impact of ball type provides soft massaging impact.
- Elastomeric green color neonatal bed disperses pressure, doesn't bottom, one side covered with non woven fabric and simply dip washable.

U PIECE / PACK



S: Small | M: Medium | L: Large
XL: Xtra Large | XXL: Xtra Xtra Large | U: Universal
Dimensions : L × W × H



Organic
Environment
Friendly
(Non Toxic)



Elastomeric
Cushioning
(~2 times stretchability)



Natural
Skin Touch

GMP
COMPLIANT

ISO
9001:2015
CERTIFIED

CE
CERTIFIED

progelTM



GEL SMITHTM

AN ISO 9001 : 2015 COMPANY



B - 903, Birch Tower, Ansal Town,
Modipuram Bypass, NH - 58, Near Bikanerwala,
Meerut (U.P.) - 250001, INDIA
Mobile: +91-9368210434, 9627010434
Phone: +91-121-2577055
E-mail: gelsmith.pramit@gmail.com
Website: www.gelsmith.com